



Local Life **Japan**

ローカルライフ言語学院

Learn the Language
Live the Culture
Feel like a Local

明石

PUBLIC TRANSPORT



BUS



TRAIN



FERRY

LIVING EXPENSES



COFFEE
¥250



LUNCH
¥700



BIG MAC
¥480

DAY TRIPS DESTINATIONS

KOBE

12
mins

AWAJI

13
mins

OSAKA

38
mins

KYOTO

69
mins

Welcome to Akashi: Japan's Hidden Gem by the Sea

Akashi is where history, culture, and nature come together effortlessly. A seaside city offering an authentic Japanese experience away from tourist crowds, Akashi blends historical charm, local vibrancy, and breathtaking coastal views.

Whether you're dreaming of quiet mornings by the ocean, lively afternoons exploring local markets, or meaningful connections with friendly locals, Akashi isn't just a destination—it's a home away from home.



学校 OUR SCHOOL

Just 2 minutes from Akashi Station and from Akashi Castle Park, our school is perfectly placed for both convenience and inspiration. With small, focused classes, a warm family-like atmosphere, and an experience tailored for growth and connection, every day here is an opportunity to live, learn, and truly experience Japan.



GREAT TEACHERS

Our native Japanese instructors receive on-going training to ensure top-quality teaching.



SMALL CLASS SIZE

With an average of five students per class and a maximum of nine.



HANDS-ON WORKSHOP

Immerse in Japanese traditions through engaging workshops led by local experts.



LOCAL INTERACTION

Build genuine connections with locals and experience Japan beyond the classroom.



START ANY MONDAY

Personalise your learning journey to fit your schedule. Start any Monday and study for 1 to 50 weeks.



COOL JAPAN: SUBCULTURE

Explore Japan's vibrant subculture, including anime, fashion, and music, guided by passionate experts.

COURSES AVAILABLE

JAPANESE COURSES

Japanese

- Part-Time - 15h / week

Japanese + Culture

- Full-Time - 23h/ week

SPECIAL PROGRAMS

- Teen Holiday Program
- JLPT Course
- Internship Course
- Working Holiday Course
- J-Find Course

OTHER COURSES

- Japanese 1:1 Lessons
- English 1:1 Lessons
- English Courses

FACILITIES

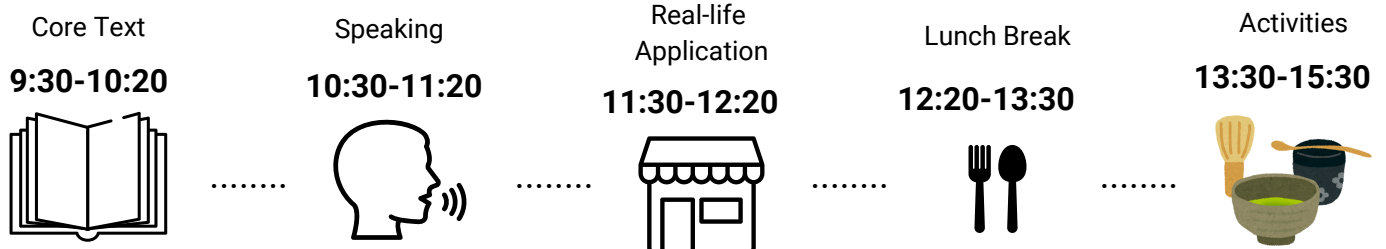
- Air-conditioned Classrooms
- Student Lounge
- TV & Games
- Free Wi-Fi
- Kitchenette
- Tea & Coffee
- Study Materials
- Japanese High-Tech Toilets

ACCESSIBILITY

- 1 min** CAFE/ RESTAURANT/ MARKET AREA
CONVENIENCE STORE / SUPERMARKET
- 2 min** TRAIN STATION / SHOPPING MALLS
HISTORIC PARK / LIBRARIES / PHARMACY
- 10 min** HARBOUR AREA / MUSEUM / ART
GALLERIES / SPORTS FACILITIES /
CYCLING TRAILS



EXAMPLE TIMETABLE



*Friday afternoons are dedicated to personal exploration and relaxation, giving you the freedom to unwind and fully enjoy your time in Japan.

YOUR JOURNEY, YOUR WAY

At Local Life Japan, we know every student comes with unique goals, plans, and needs. Our **Student Support** offers personalised care and guidance, ensuring your experience is tailored, enriching, and unforgettable.

"This place is amazing for anyone who is interested in learning about Japanese language & culture. They will help you with literally anything Japan related." -- YongHui, Singapore



授業 LESSON

Japan comes alive when you can speak the language. With this course, you'll be actively using Japanese every day from the start. No matter how long you study with us, our uniquely tailored teaching approach ensures your Japanese skills improve in a way that's both effective and practical for real-life situations.

LEVELS

Beginner - Upper Intermediate
CEFR: Pre A1 - B2

START

Any Monday

DURATION

1-50 Weeks



Communicative & Practical



Learn Japanese through engaging lessons designed for practical, everyday communication.



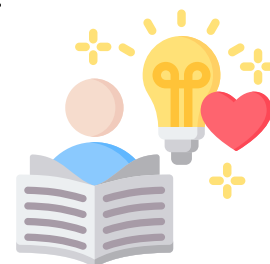
Intuitive & Effective



Designed specifically for European language speakers, our programs focus on your needs with a learner-centred approach.

WHY STUDY WITH US?

- **Speak from Day One:** Practical, real-life Japanese you can use immediately.
- **Small Classes, Big Impact:** Engaging lessons with personalised attention.
- **All-in-one Learning:** Build speaking, listening, reading and writing skills.
- **Fast Progress:** Start speaking confidently in just one week.
- **Beyond the Classroom:** Take your skills into the real world.
- **Your Goals, Our Focus:** Academic support tailored to your journey.



"Good school for actually learning how to talk Japanese in every day life, I can definitely recommend it." -- Silvia, Austria



成長 PROGRESS

At Local Life Japan, you can start your journey **any Monday**—it's all about flexibility. Our rolling start system ensures you'll join the class level that matches your ability from day one, so you'll feel confident and ready to grow.

Placement Process



1. Before your departure, you'll take a short test to gauge your language level.
2. On your first day, our experienced Japanese teacher will confirm your level through a brief follow-up session. If you'd prefer to move to a different class, simply let us know by the end of the day.

WHAT YOU CAN ACHIEVE IN..

2 WEEKS

Master essential survival phrases to navigate daily life in Japan with ease.

4 WEEKS

Go beyond the basics and start unlocking real conversations.

12 WEEKS

Build a foundation to form sentences naturally, and connect with locals with ease.

24 WEEKS

Unlock real conversations. You're not just learning Japanese —you're living it.

50 WEEKS

Speak fluently, and navigate life with confidence. Japan isn't just a destination—it's home.

CEFR A1
JLPT -

A2-1
N5

A2-2
N4

B1
N3

B2
N2

"The classes are designed for you to speak more Japanese thus building your overall speaking ability which I found it very useful." -- WenWei, Singapore





活動 ACTIVITY



At Local Life Japan, we believe that true learning goes beyond the classroom. Our carefully curated cultural and social activities are designed to immerse you in the heart of Japanese life, allowing you to experience the traditions, connect with the locals, and build unforgettable memories.



SAMPLE ACTIVITY SCHEDULE

Samurai Ship Cruise	Japanese Festival	Tea Ceremony	Calligraphy
Traditional Craft	Fruit Picking	Yukata Elegance	Sushi Workshop



EXPLORE. CONNECT. BELONG.

We work closely with Akashi City, local schools and organisations to offer vibrant and enriching experiences. From attending local festivals to participating traditional rituals, every moment is an opportunity to dive deeper into the essence of authentic Japanese culture.

EXTRA ACTIVITIES

Enjoy a full program of social events and activities, ensuring your free time is just as exciting as your study time! Here are some highlights:



OUTINGS:

On select weekends and evenings, we organise excursions to local festivals, events, and attractions. Activities include game night, mochi-making with local farmers, local university tour, local school visits, factory tour and pub crawls.

MAKING MOCHI WITH LOCALS



GAME NIGHT WITH LOCALS



LOCAL COSPLAY EVENT:



BEACH CLEANING:

Join Akashi City's “ウミガメプロジェクト” to help preserve sea turtles. Participate in meaningful beach cleaning activities while learning about marine conservation and supporting local wildlife efforts.



“The cultural activities held by the school are fantastic opportunities to expose yourself to many parts of Japanese culture, if not then just good fun! My favourites were mochi making, Christmas party, Japanese arts and craft and strawberry picking.” -- Jaedon, Singapore



宿泊 HOMESTAY



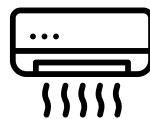
Experience true cultural immersion by staying with one of our carefully chosen Japanese host families, who are enthusiastic about sharing their traditions and making you feel at home. A homestay is the perfect opportunity to practice what you learn in class and deepen your connection to the local culture.

We take your preferences and needs into account to ensure your host family is the right fit for you. Many students find that their host family becomes their closest connection in Japan, creating lifelong bonds. Our thorough selection process ensures each family provides a welcoming, supportive environment for your stay.



Best Match for You

Families are chosen based on personality, life-style, hobbies and interests.



Comfortable and Homely

Private room with air conditioning to ensure a comfortable stay.



Home-cooked Meals

Families provide daily home-cooked breakfast and dinner everyday.



360 Support Provided

Comprehensive support with post-arrival orientation and a 24-hour hotline.

"What a lovely family I had! They were so helpful and showed me so much about daily Japanese life! We always had breakfast and dinner together." -- Silvia, Austria

EXPERIENCE JAPAN, BEYOND CLASSROOM.

Limited to
15-19 yrs old

ティーン TEEN PROGRAM

A special package available only during the summer holidays. Each week, student enjoy 15 Japanese lessons, 10 guided individual learning sessions, plus 10 social and cultural activity sessions.

PACKAGE INCLUDES

- Registration Fee
- Airport Pick-up & Drop-off
- Japanese Lessons
- Books and Materials
- Social-cultural Activities
- Transport for Activities
- Homestay Placement Fee
- Homestay
- Breakfast and Dinner
- Events with Local Students
- Weekly Email Update to Parents
- 24/7 Hotline
- Your own Yukata to Take home!



ALL INCLUSIVE.
FULL IMMERSION.

LEVELS Beginner - Intermediate

START Any Monday

DATES 30th Jun - 5th Sep 2025



TIMETABLE

Monday to Friday

9:30-12:20	Japanese Lesson
13:30-15:00	Guided Individual Learning
15:00-17:00	Social-Cultural Activity

Summer in Japan is a time for outdoor dining, vibrant fireworks, and lively festivals! Enjoy the season with visits to Suma Beach, Awaji Island and cooler mountain retreats, all conveniently within metro distance from our school.



Welcome to Hyogo: Japan's Crossroads of Tradition and Modernity

🏯 Himeji Castle - The Crown Jewel of Japan

Built in 1609, step into a perfectly preserved samurai castle with over 400 years of history. Japan's most majestic and flawlessly maintained castle and a UNESCO World Heritage Site.



♨️ Arima Onsen - Japan's Timeless Mountain Retreat

One of Japan's oldest and most famous hot spring towns, Arima Onsen is nestled in the mountains, cherished for over 1,000 years. Don't miss Arima Kago, a traditional bamboo handicraft shop dating back to the 15th century.

HYOGO MUST VISITS

🍷 Nada Sake District - The Heart of Japanese Sake

Home to Japan's finest sake breweries, Nada Sake District produces one-third of the world's sake. Known for its pure spring water and ideal brewing climate, this historic district is a must-visit for sake enthusiasts and cultural explorers alike.



🏰 Awaji Island - The Birthplace of Japanese Mythology

Known as Japan's mythical first island, Awaji Island is celebrated for its stunning coastal scenery, rich agriculture, and vibrant cultural heritage. A perfect getaway offering fresh fruits and seafood, tranquil landscapes, and a glimpse into ancient legends.

Connecting Akashi to Awaji Island, the Akashi Kaikyo Bridge is the world's longest suspension bridge. Stretching 3,911 metres, it's an engineering marvel offering breathtaking views of the Seto Inland Sea.



DATES & PRICE

2025

LOCAL LIFE JAPAN

COURSE / ADD-ONS

Japanese Course (15 lessons, 9:30 - 12:20)	¥ 37,000 pw
Japanese + Culture Course (23 lessons, 9:30 - 15:20)	¥ 44,800 pw
Add-on Private Lessons	¥ 4,500 per hour

PRIVATE LESSONS (Customised)

Online Lesson (1h)	¥ 5,000
Online Lesson (20h)	¥ 95,000
Face-to-face Lessons (1h)	¥ 5,500 per lesson
Semi-private Lessons (1h)	¥ 2,750 per person

OTHER FEES

Registration (One-time)	¥ 22,000
Textbook and Materials	¥ 2,000 pw

2025 START DATES FOR BEGINNERS

Jan 06	Feb 10	Mar 17	Apr 21	May 26
Jun 30	Aug 04	Sep 08	Oct 13	Nov 17

JUNIOR PROGRAM 30th Jun - 5th Sep 2025

Inclusive of: Airport Pick-up & Drop-off / Registration / Tuition / Course Materials / Cultural Activities / Transport of Activities / Homestay Placement Fee / Homestay with Private Room / Home-cooked Breakfast & Dinner / Events with Local Students / Weekly Email Updates to Parents / 24h Hotline

Teen Holiday Program (First week)	¥ 200,000
Each Additional Week	¥ 100,000 pw

HOMESTAY

15-60 min by public transport

Homestay Placement Fee	¥ 25,000
Homestay Breakfast and dinner included. 18:00 check-in, 12:00 check-out	¥ 45,000 pw

PRIVATE APARTMENT

2-10 min walk from Local Life Japan

Contract Fee	¥ 5,000
Rent	¥ 38,500 pw
Cleaning Fee	¥ 15,000
Bedding and Other Amenities	¥ 15,000

AIRPORT TRANSFER

Available for Kansai International Airport, Itami Airport, and Kobe Airport.

Airport Pick-up	¥ 30,000
Airport Drop-off	¥ 30,000
Additional Fee Outside of office hours (9:00 - 18:00)	¥ 16,500

OTHER FEES

Short-term Visa Document Express Mailing Fee	¥ 7,000
Bank Fee	¥ 6,700

SCHOOL HOLIDAYS

2024 Dec 28 - 2025 Jan 05	2025 Dec 20 - 2026 Jan 04
---------------------------	---------------------------

OTHER COURSES

JLPT Course (4 weeks)	¥ 144,400	Japanese + Working Holiday Course (6 weeks)	¥ 295,800
Japanese + Internship Course (6 weeks)	¥ 295,800	Japanese + J-Find Course (12 weeks)	¥ 591,600

*All fees are in Japanese Yen

*All prices are shown tax-exclusive (税抜). A 10% consumption tax will be added at checkout.



Akashi City , Hyogo Prefecture 兵庫県明石市



<https://local-life-japan.com>



8F Shiragiku Grand Bldg,
1-7-4 Oakashi-cho, Akashi,
Hyogo, Japan 673- 0891



local_life_japan



info@local-life-japan.com



+81 78 962 7080



+81 78 962 7080



Japan. Endless Discovery.



Local Life Japan

ローカルライフ言語学院



**Want to learn more?
Book a free consultation today!**